

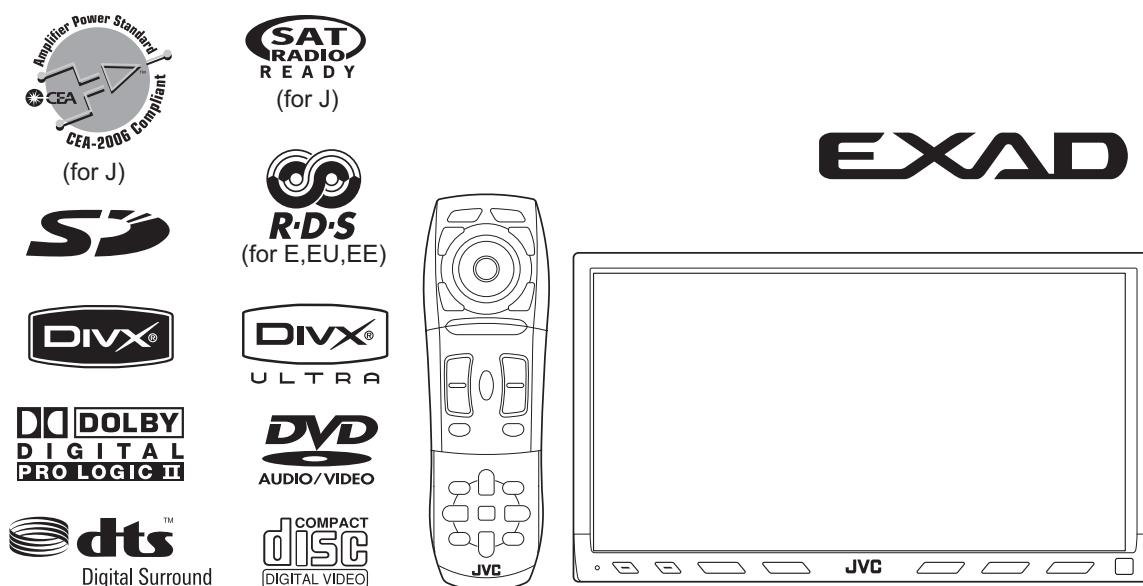
# JVC

## SCHEMATIC DIAGRAMS

### DVD RECEIVER WITH MONITOR

**KW-AVX800J,KW-AVX800E,KW-AVX800EU**  
**KW-AVX800EE,KW-AVX800U,KW-AVX800UN**  
**KW-AVX800A**

CD-ROM No.SML200705



Lead free solder used in the board (material : Sn-Ag-Cu, melting point : 219 Centigrade)  
Lead free solder used in the board (material : Sn-Cu, melting point : 230 Centigrade)

### Contents

Block diagram .....	2-1
Standard schematic diagrams .....	2-2
Printed circuit boards .....	2-8 to 11

## Safety precaution

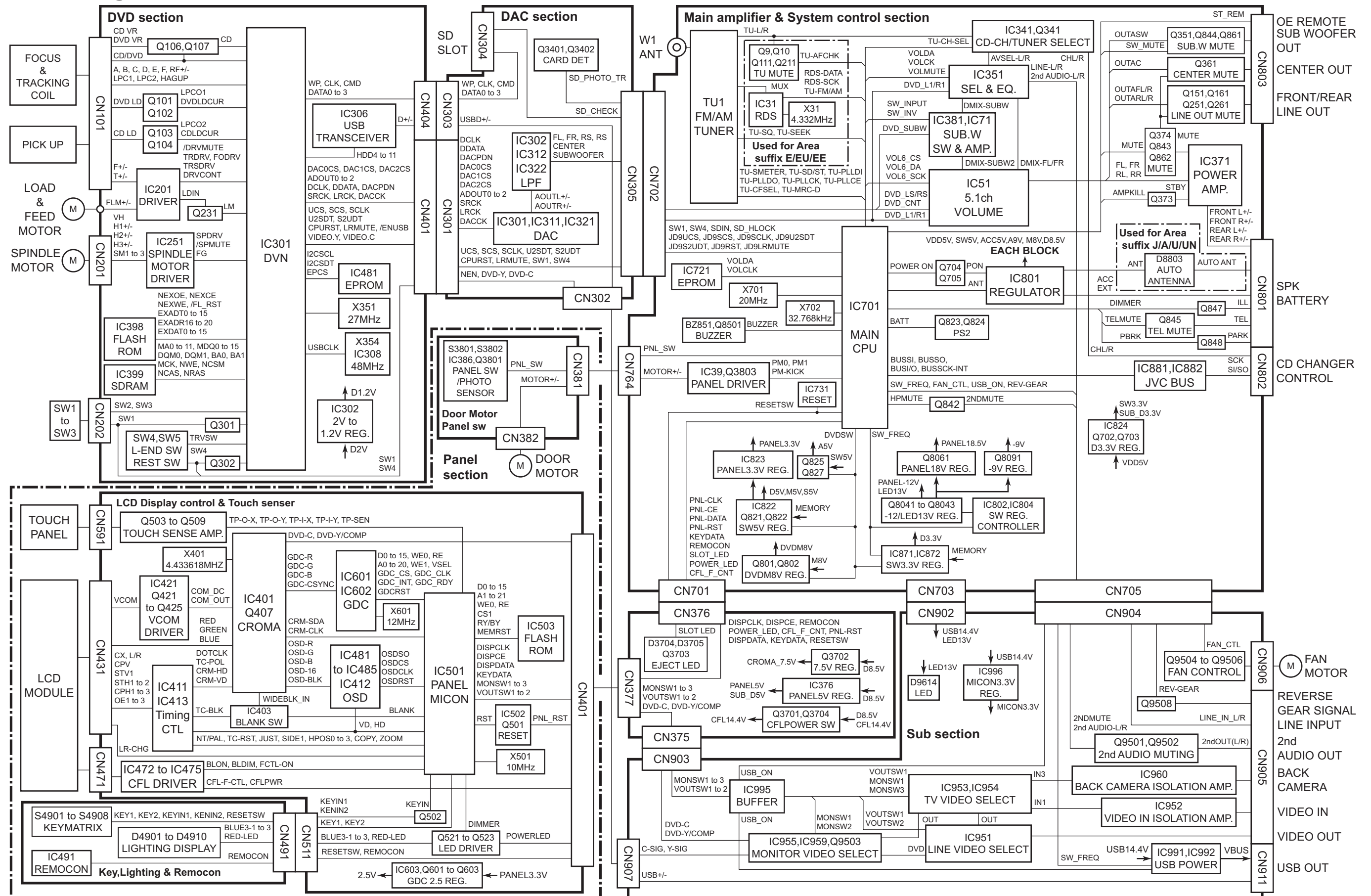


**CAUTION** Burrs formed during molding may be left over on some parts of the chassis. Therefore, pay attention to such burrs in the case of performing repair of this system.



**CAUTION** Please use enough caution not to see the beam directly or touch it in case of an adjustment or operation check.

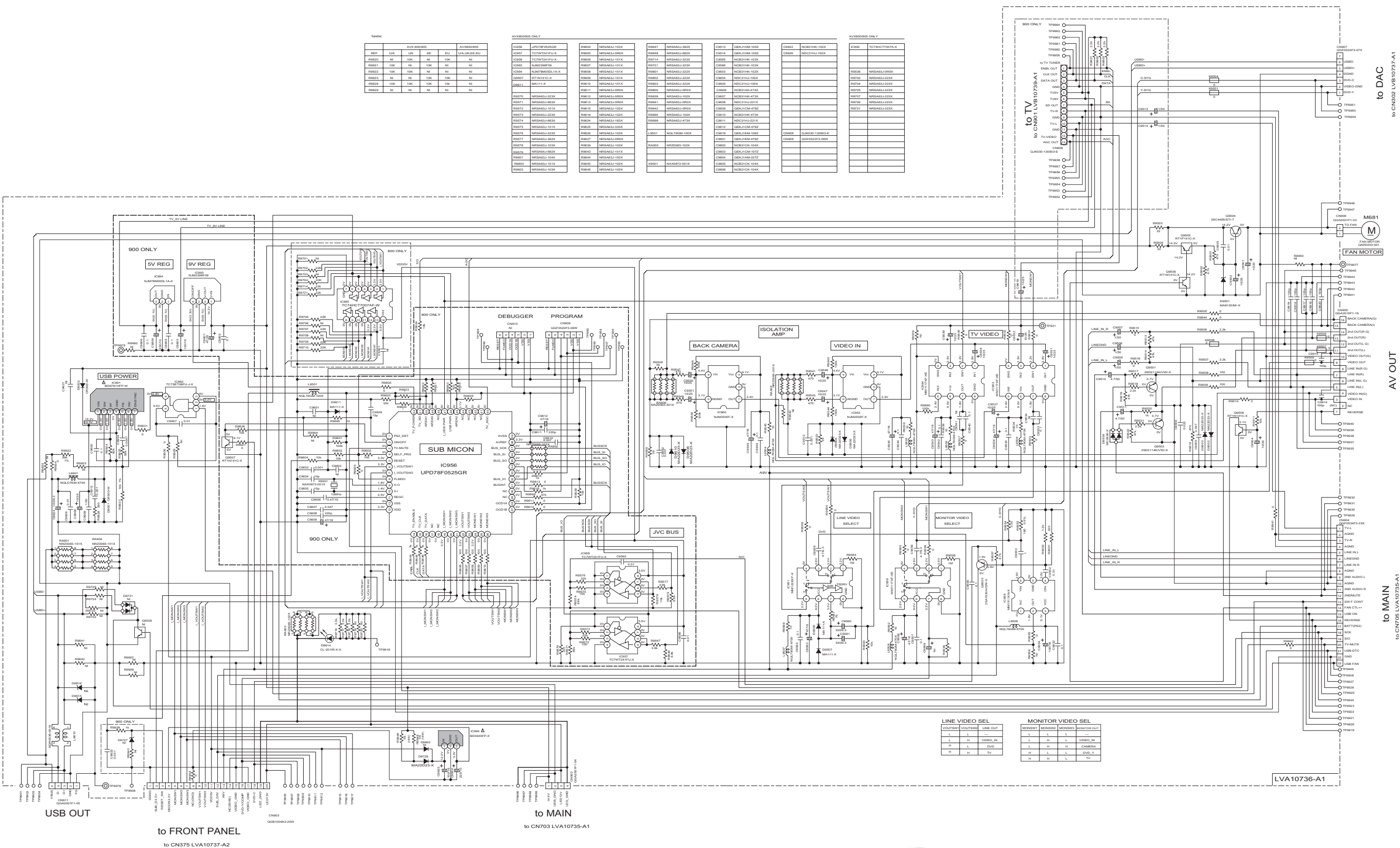
## Block diagram




## ■ Main section




### ■ Sub section



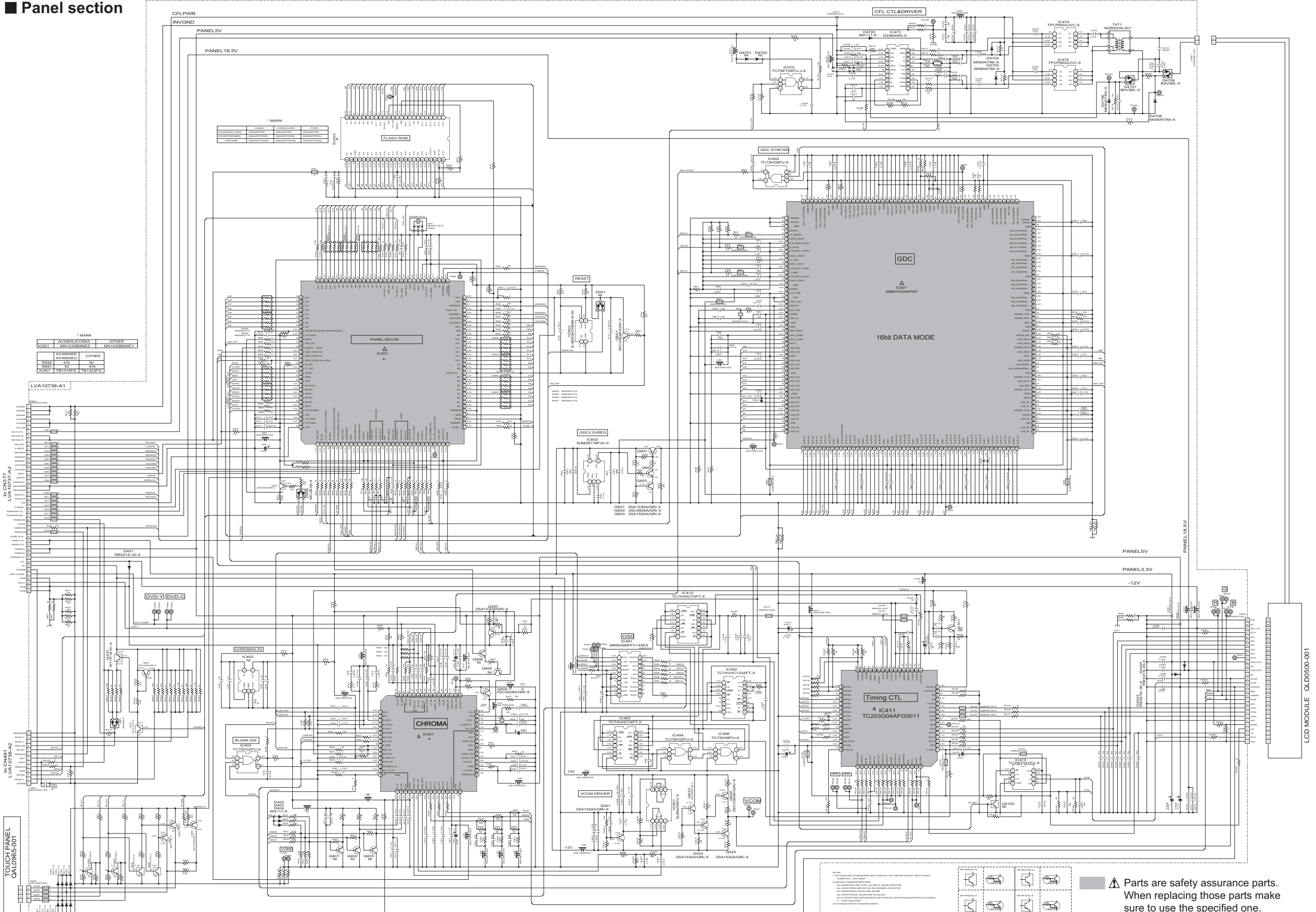
NOTES

1. VOLTAGES ARE DC-MEASURED WITH A DIGITAL VOLT METER WITHOUT INPUT SIGNAL CONDITION — DVD MODE. ( ) TV MODE.  USB MODE.
2. UNLESS OTHERWISE SPECIFIED:  
ALL RESISTORS ARE 1/10W ±5% METAL GLAZE RESISTOR.  
ALL CAPACITORS ARE 50V/25V OR 16V CERAMIC CAPACITOR.  
ALL RESISTANCE VALUES ARE IN OHM.  
ALL CAPACITANCE VALUES ARE IN uF(p=pF)  
ALL E. CAPACITORS ARE SHOWN IN THE FORM OF CAPACITANCE(uF)/RATED VOLTAGE(V)  
F — FILM CAPACITOR
3. NI STANDS FOR NOT MOUNTED PARTS

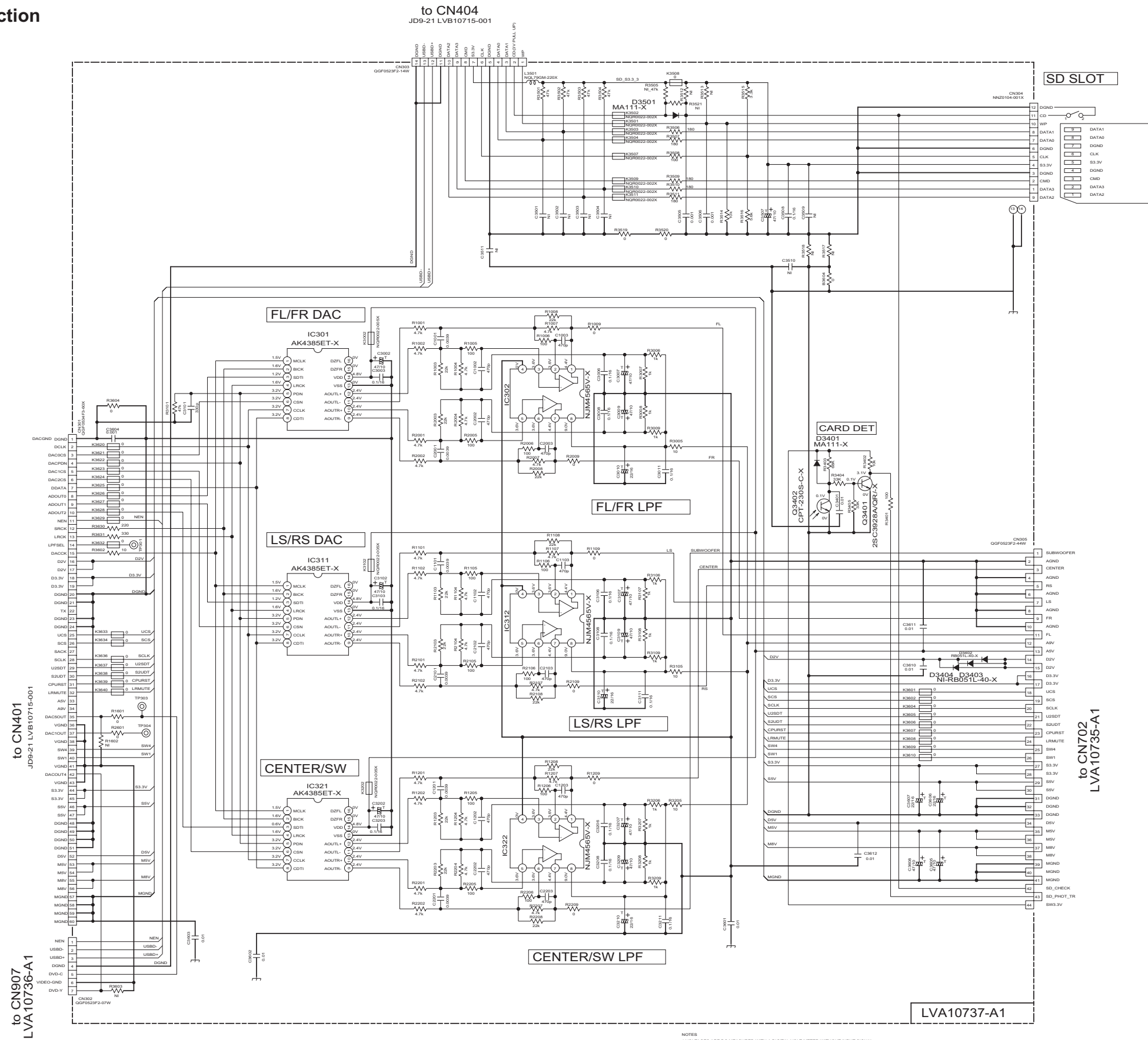
 Parts are safety assurance parts. When replacing those parts make sure to use the specified one.



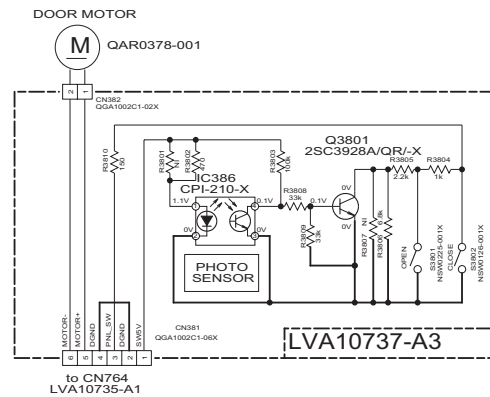
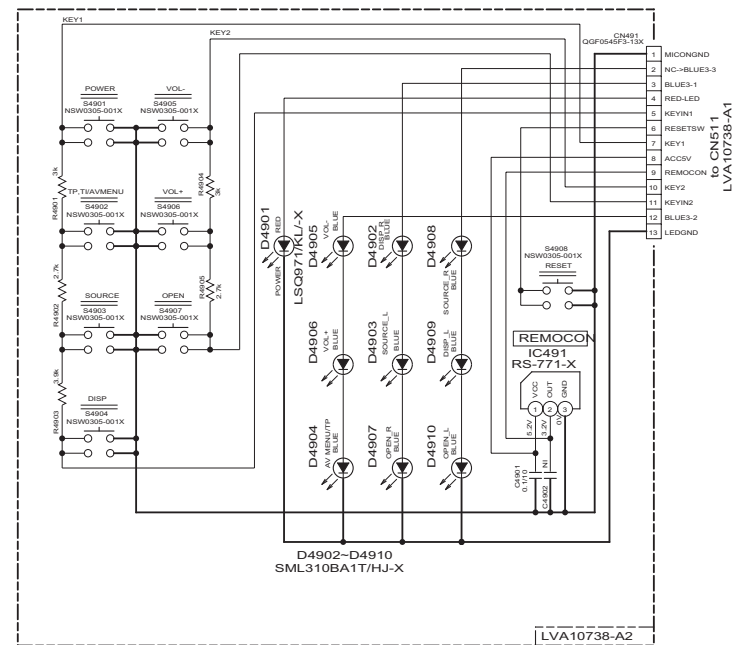
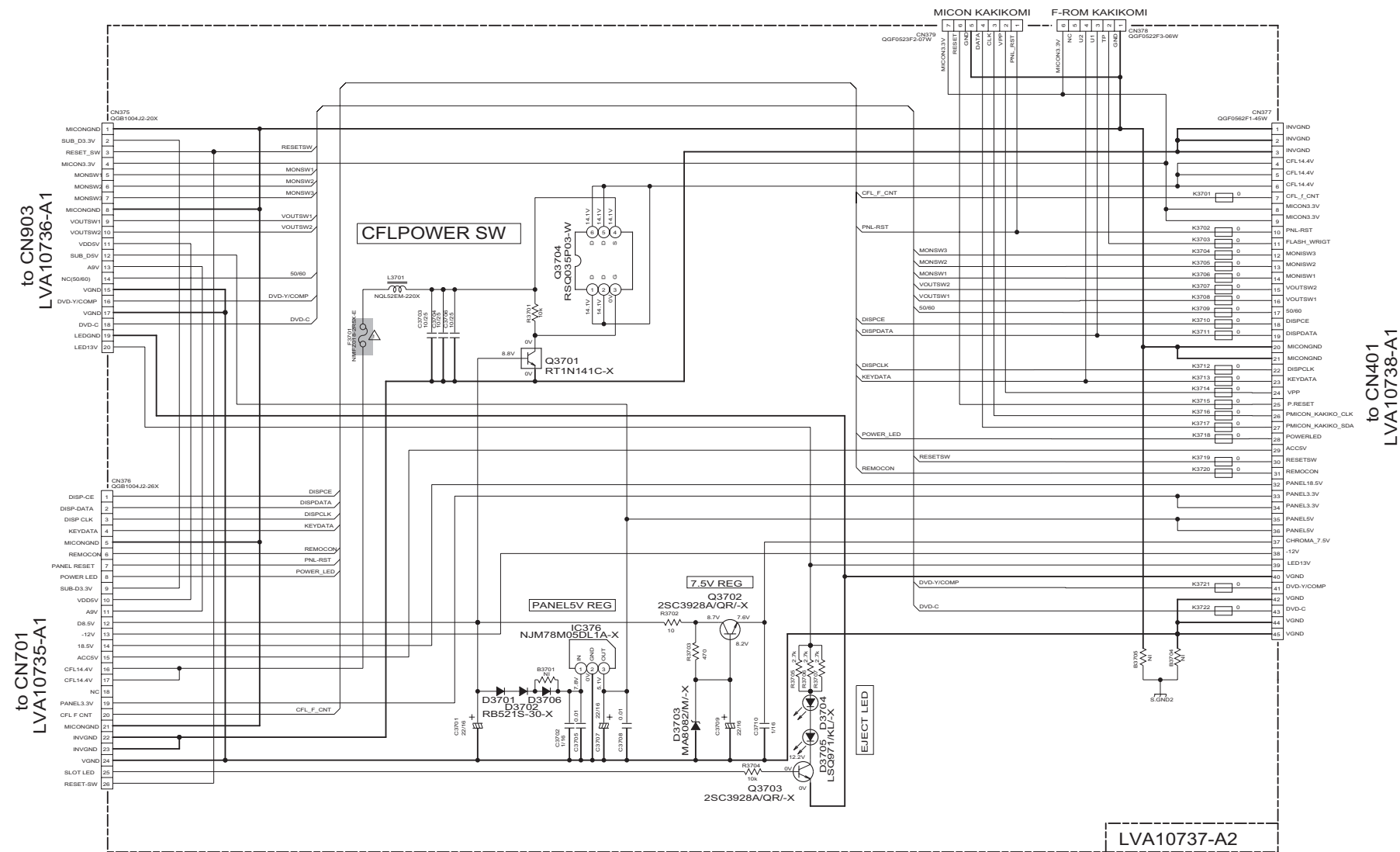
## ■ Panel section



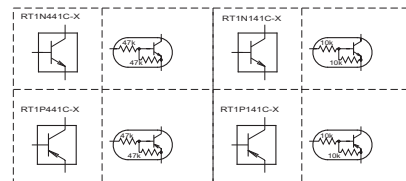
## ■ DAC section



■ Door, Front, Key section



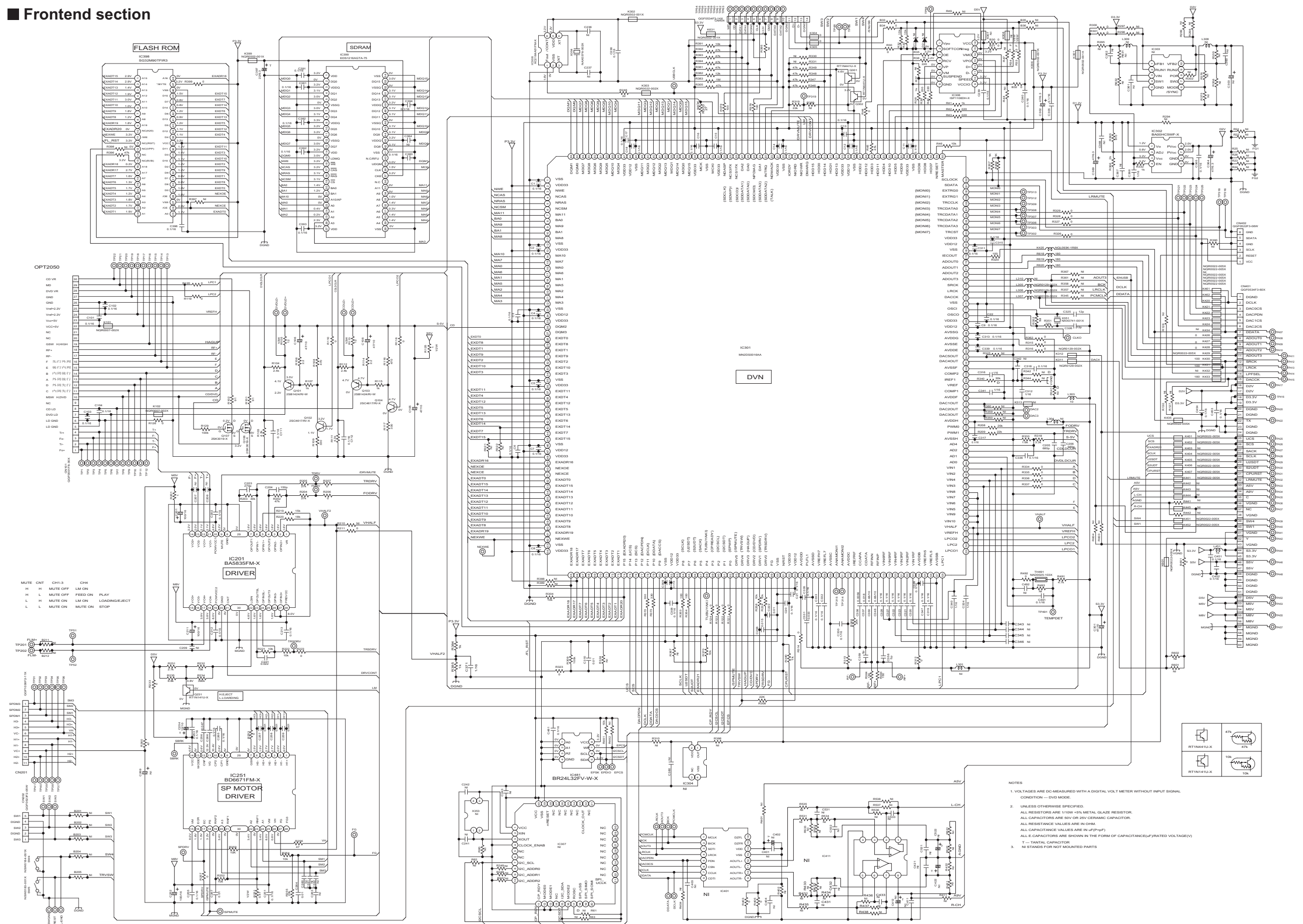
NOTES  
1. VOLTAGES ARE DC-MEASURED WITH A DIGITAL VOLT METER WITHOUT INPUT SIGNAL.  
CONDITION --- DVD MODE  
2. UNLESS OTHERWISE SPECIFIED,  
ALL RESISTORS ARE 1/10W ±5% METAL GRAZE RESISTOR.  
ALL CAPACITORS ARE 50V/25V CERAMIC CAPACITOR.  
ALL CAPACITANCE VALUES ARE IN nF(μF/pF)  
ALL E-CAPACITORS ARE SHOWN IN THE FORM OF CAPACITANCE(μF)/RATED VOLTAGE(V).  
F --- FILM CAPACITOR  
3. NI STANDS FOR NOT MOUNTED PARTS.



Parts are safety assurance parts.  
When replacing those parts make  
sure to use the specified one.



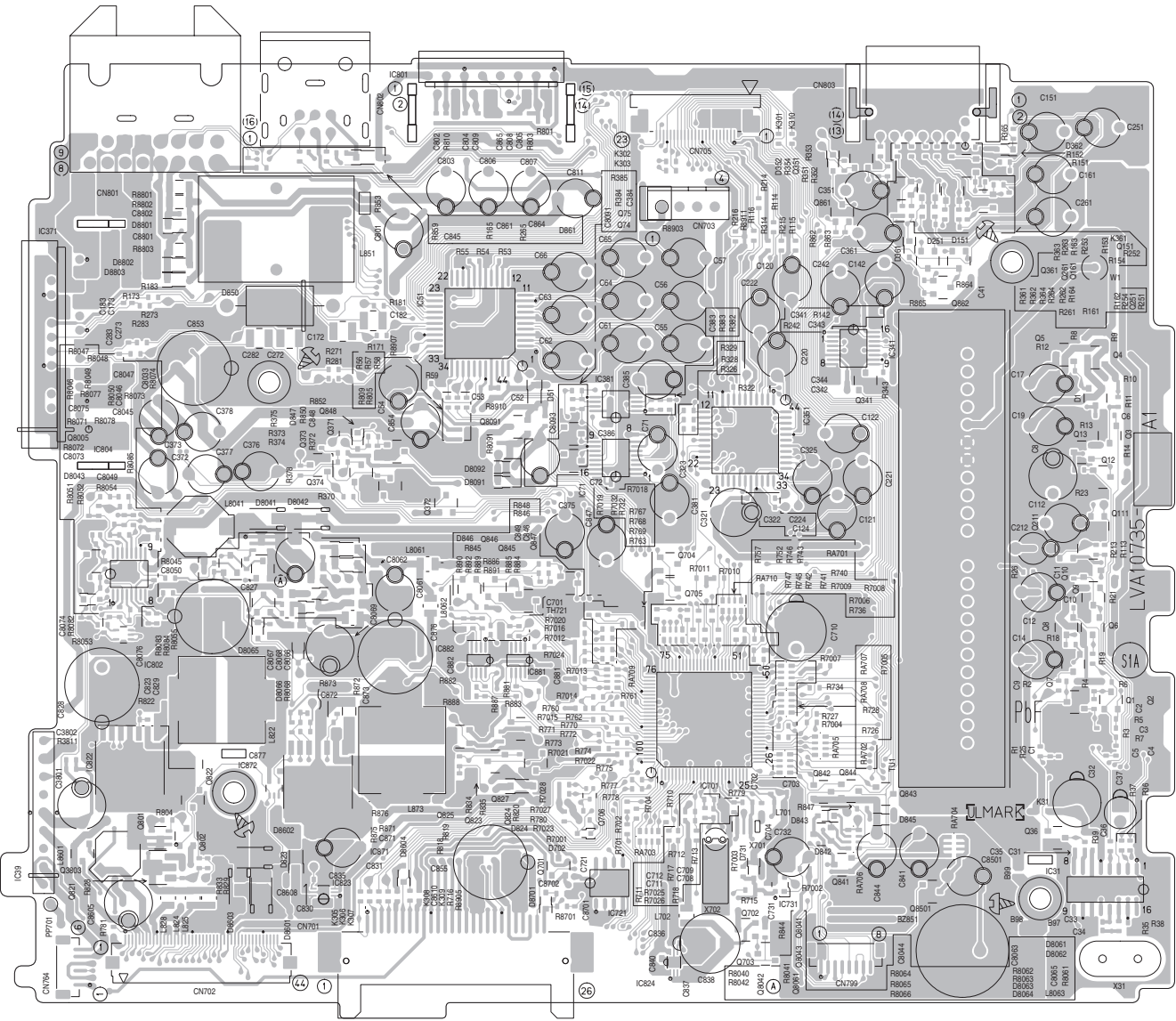
## ■ Frontend section



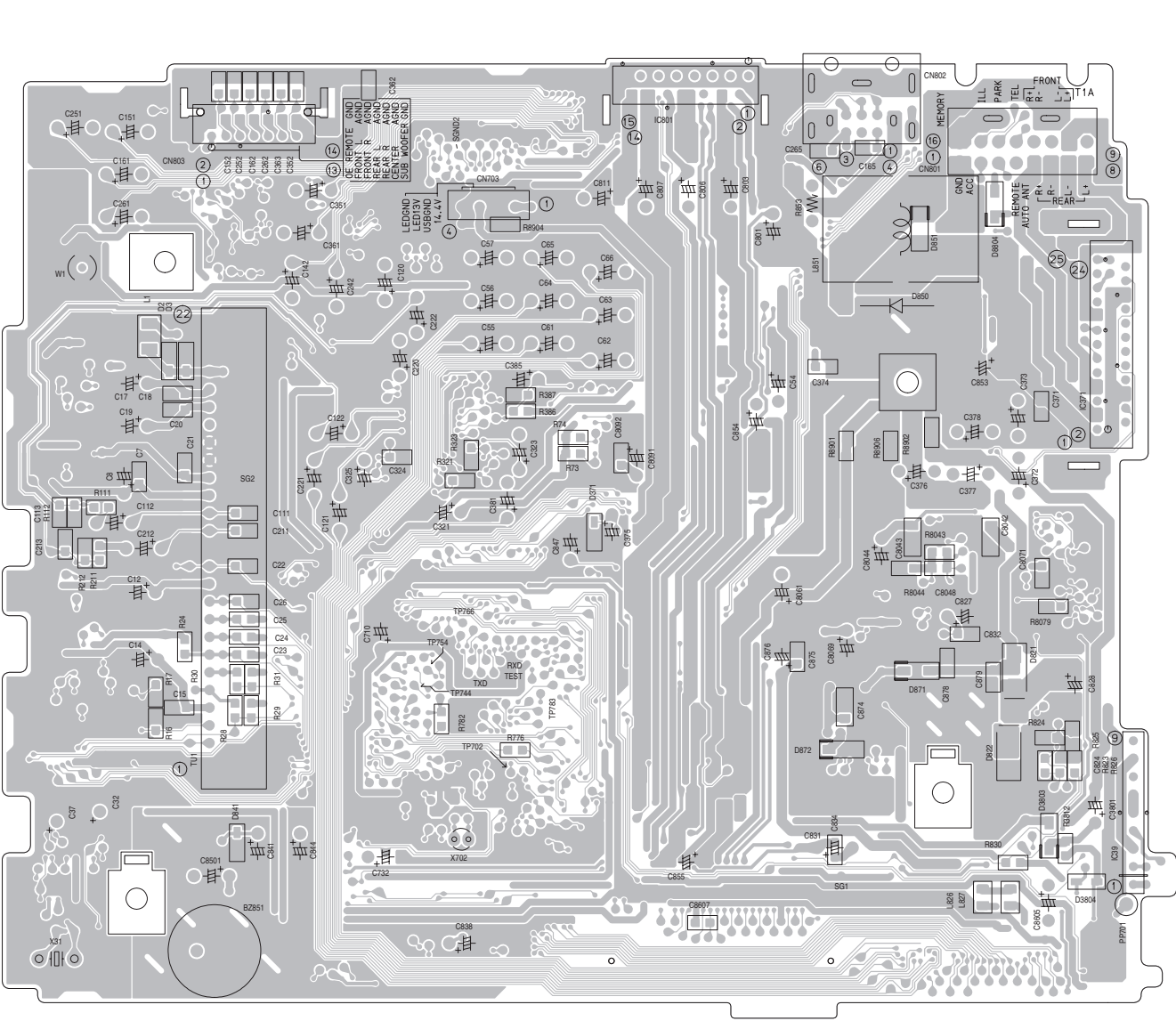
Printed circuit boards

- Main board
  - Lead free solder used in the board (material : Sn-Ag-Cu, melting point : 219 Centigrade)
  - Lead free solder used in the board (material : Sn-Cu, melting point : 230 Centigrade)

(forward side)



(reverse side)



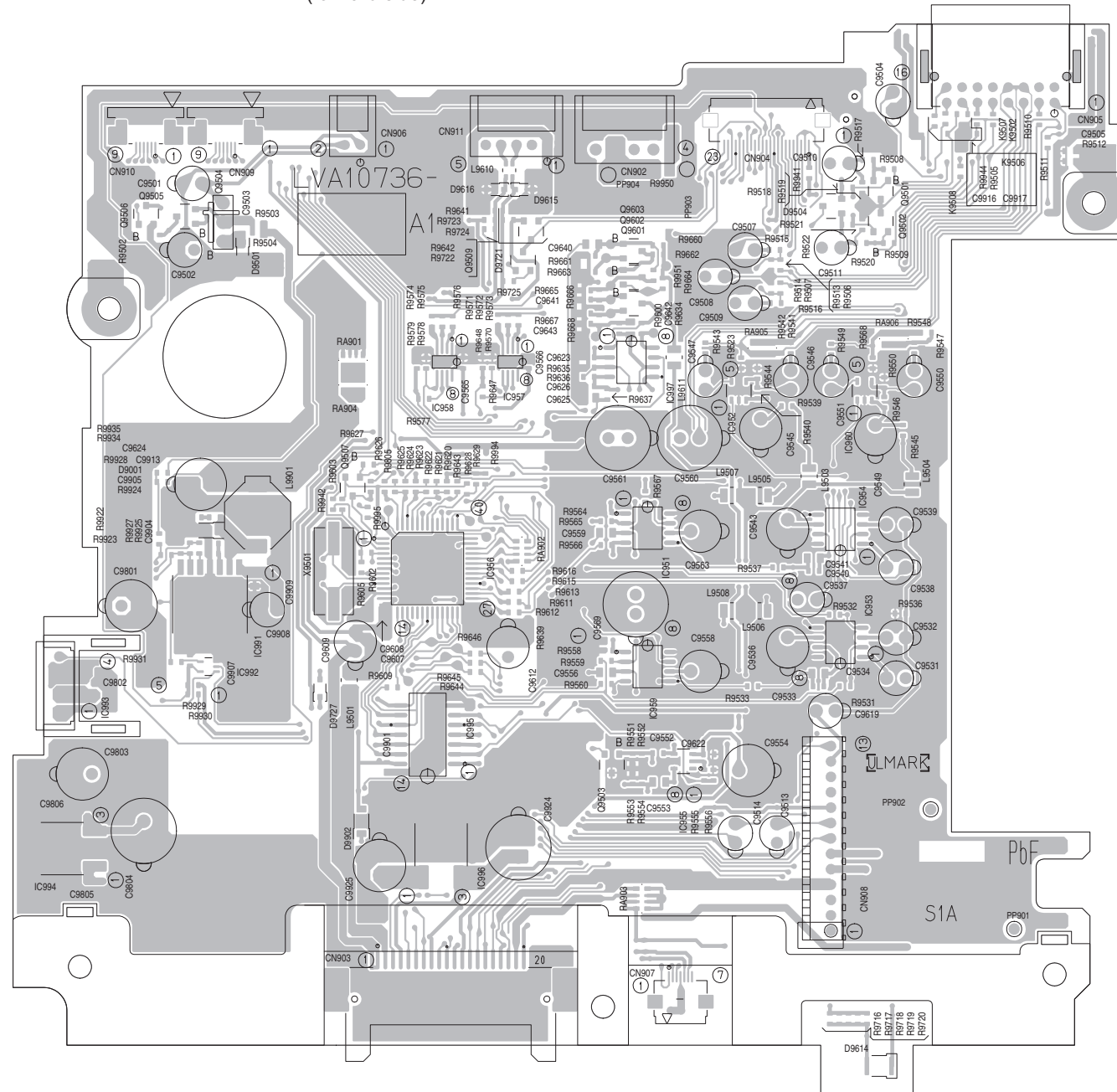


■ **Sub board**      Lead free solder used in the board (material : Sn-Ag-Cu, melting point : 219 Centigrade)  
 Lead free solder used in the board (material : Sn-Cu, melting point : 230 Centigrade)

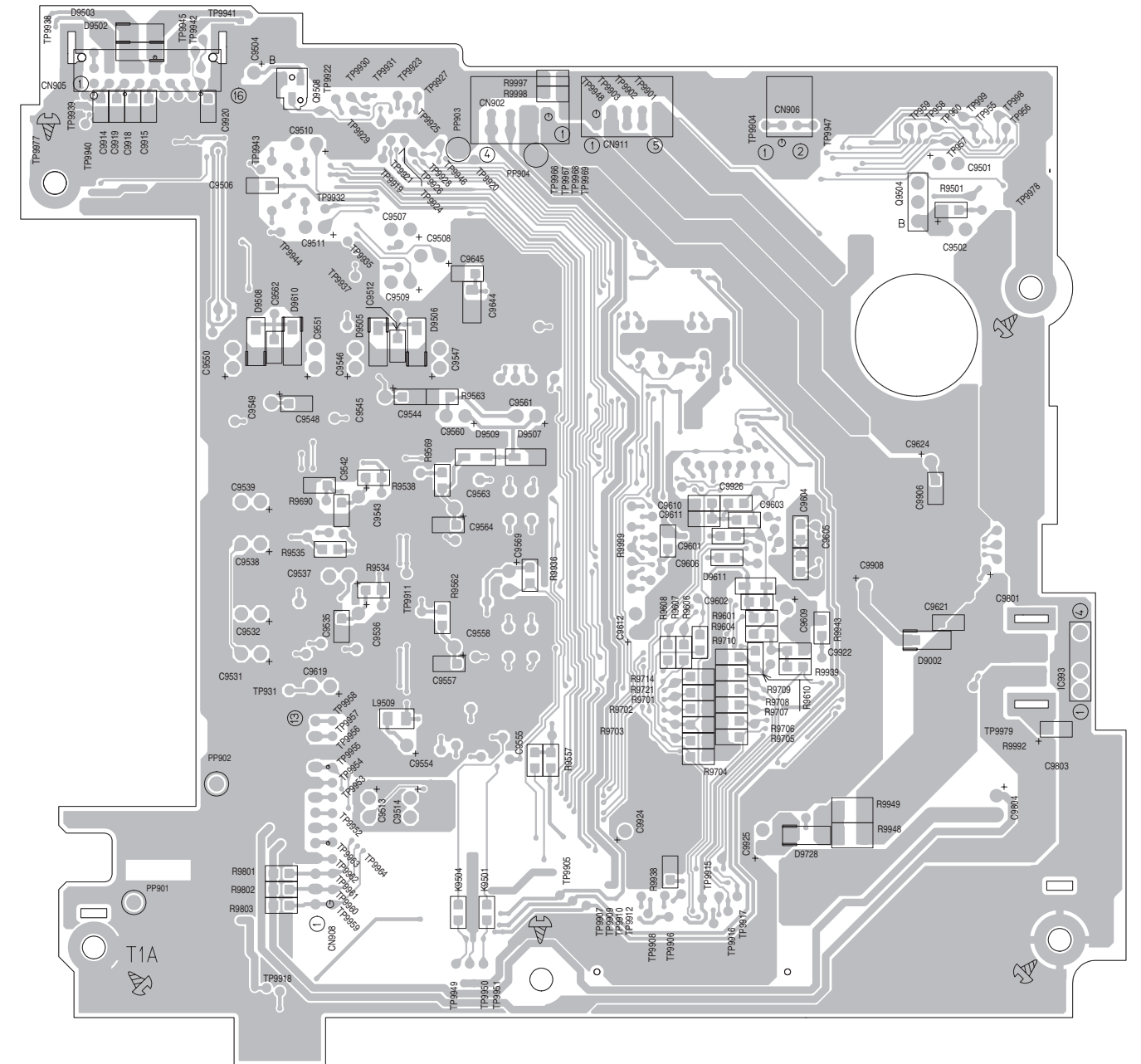
Lead free solder used in the board (material : Sn-Ag-Cu, melting point : 219 Centigrade)

Lead free solder used in the board (material : Sn-Cu, melting point : 230 Centigrade)

(forward side)



(reverse side)



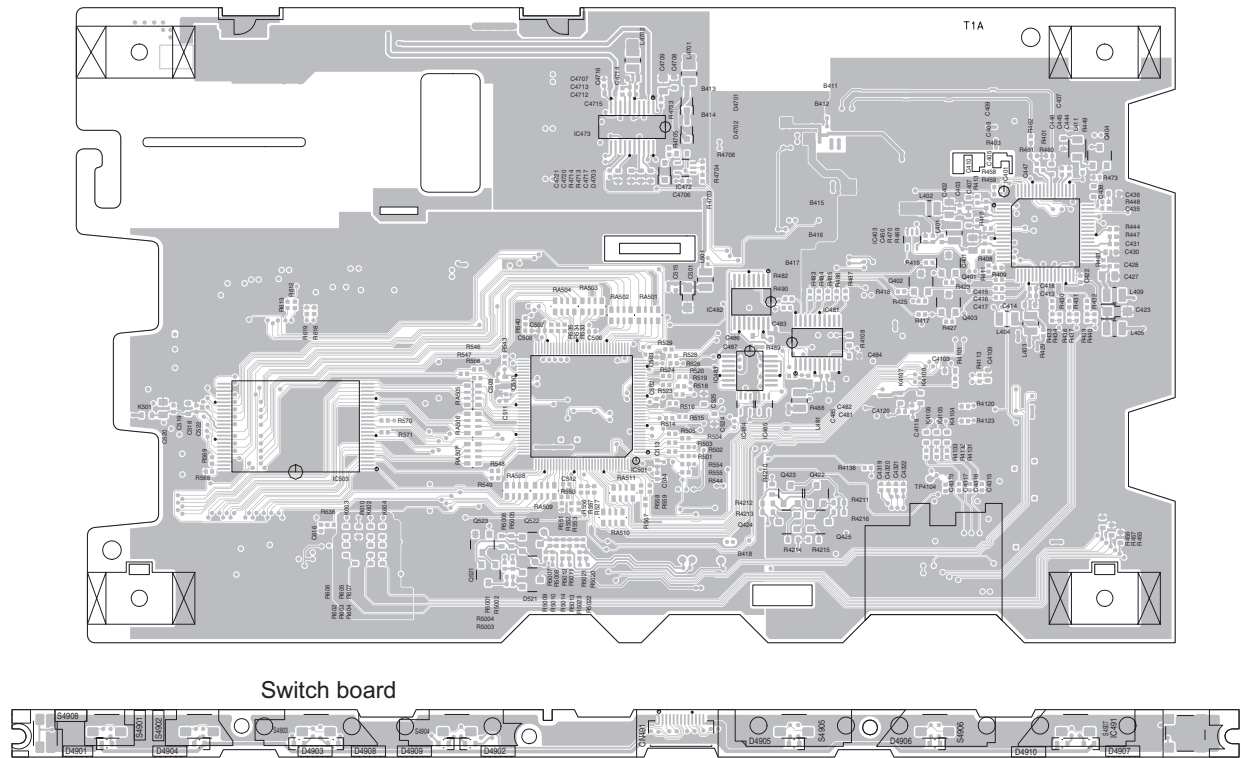
Lead free solder used in the board (material : Sn-Ag-Cu, melting point : 219 Centigrade)

(forward side)

Panel board

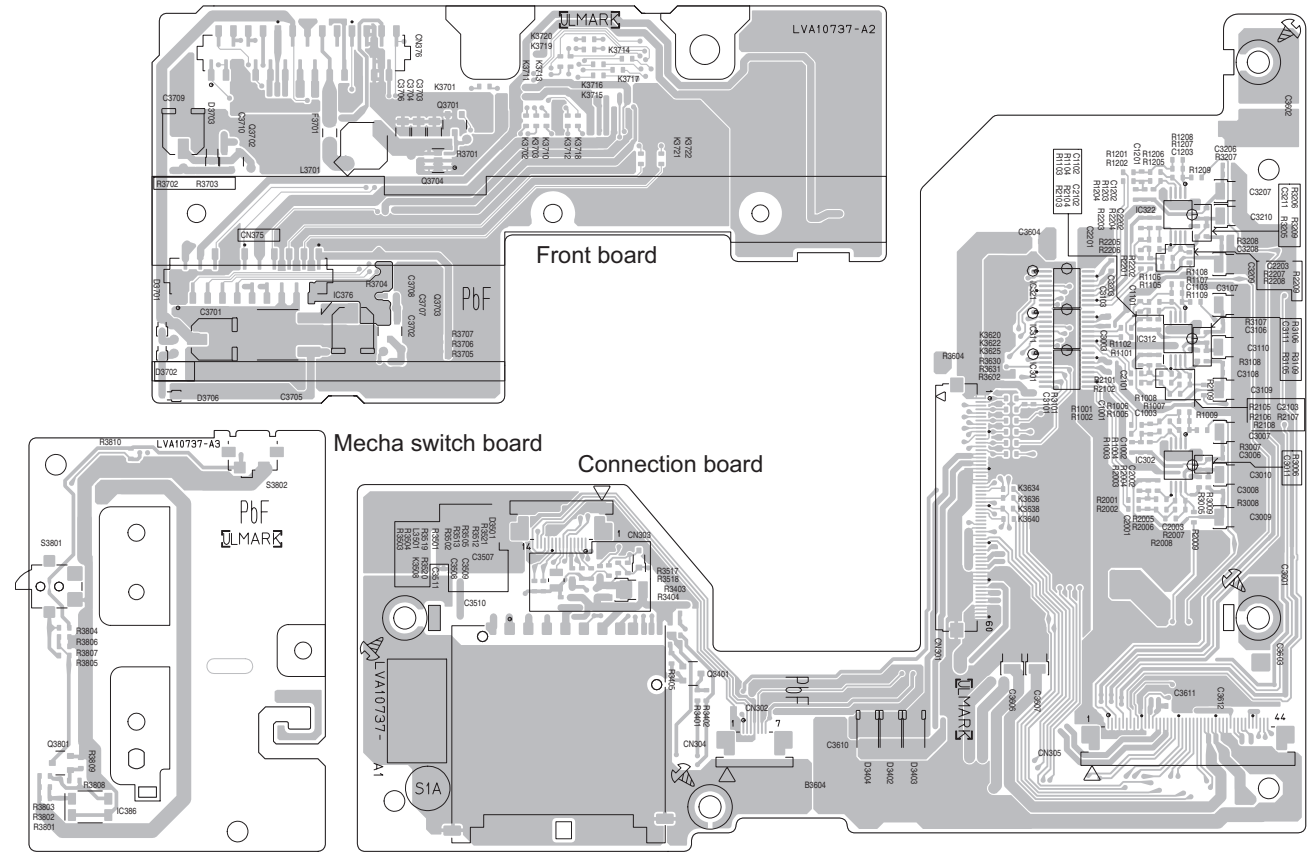
Switch board

## Panel board



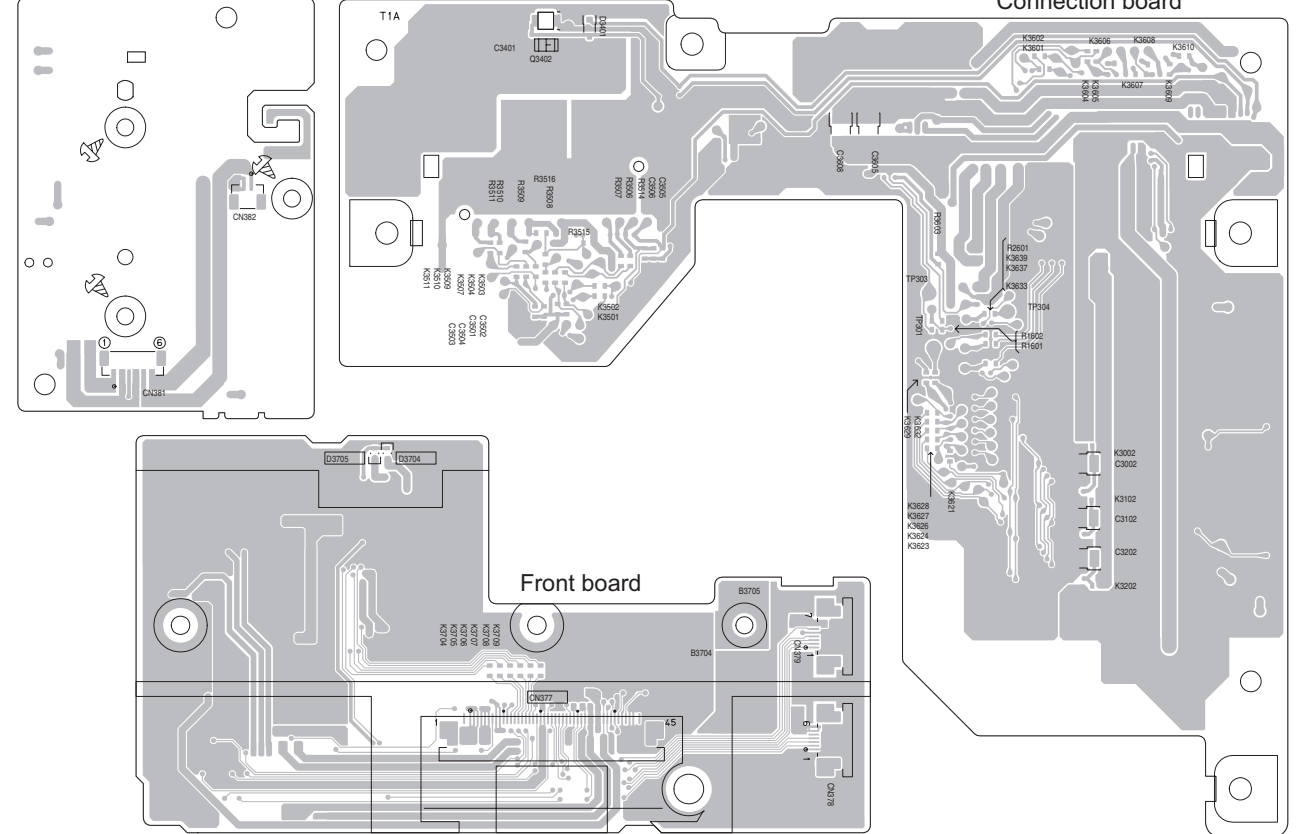
Lead free solder used in the board (material : Sn-Ag-Cu, melting point : 219 Centigrade)

Lead free solder used in the board (material : Sn-Cu, melting point : 230 Centigrade)



---

Mecha switch board

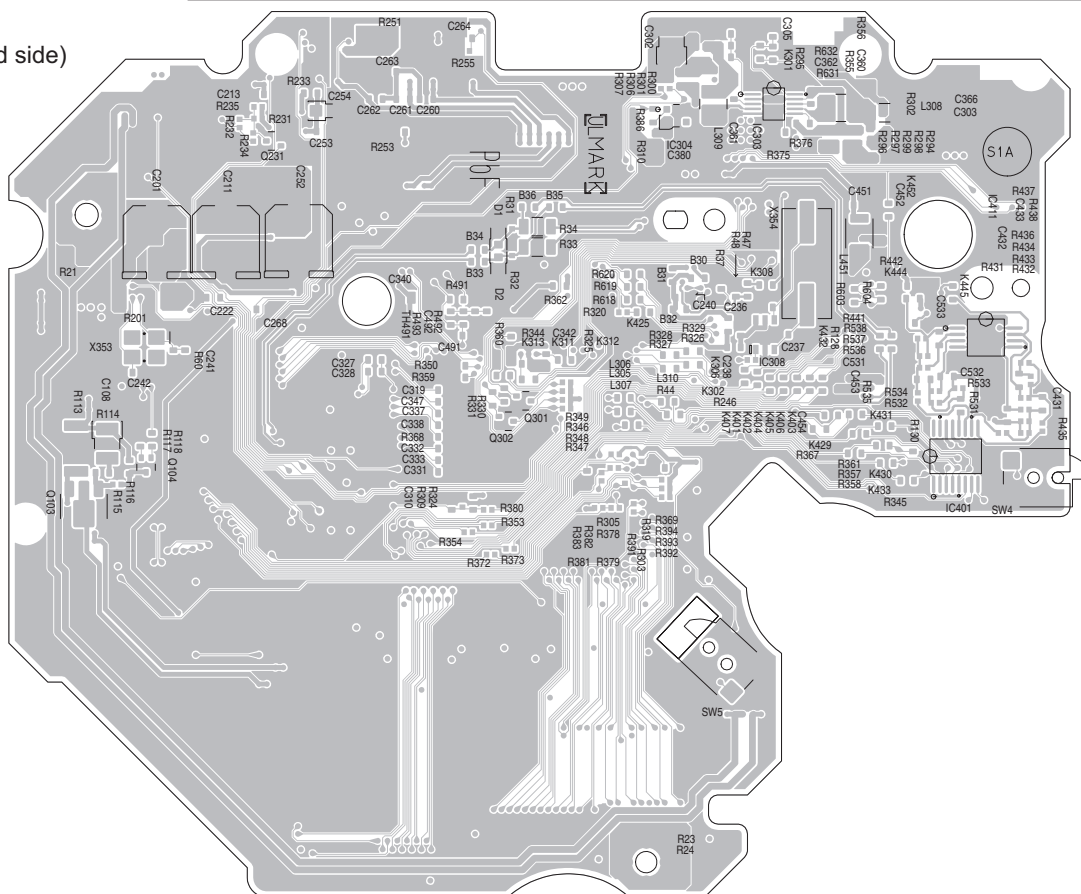


## ■ Front end board

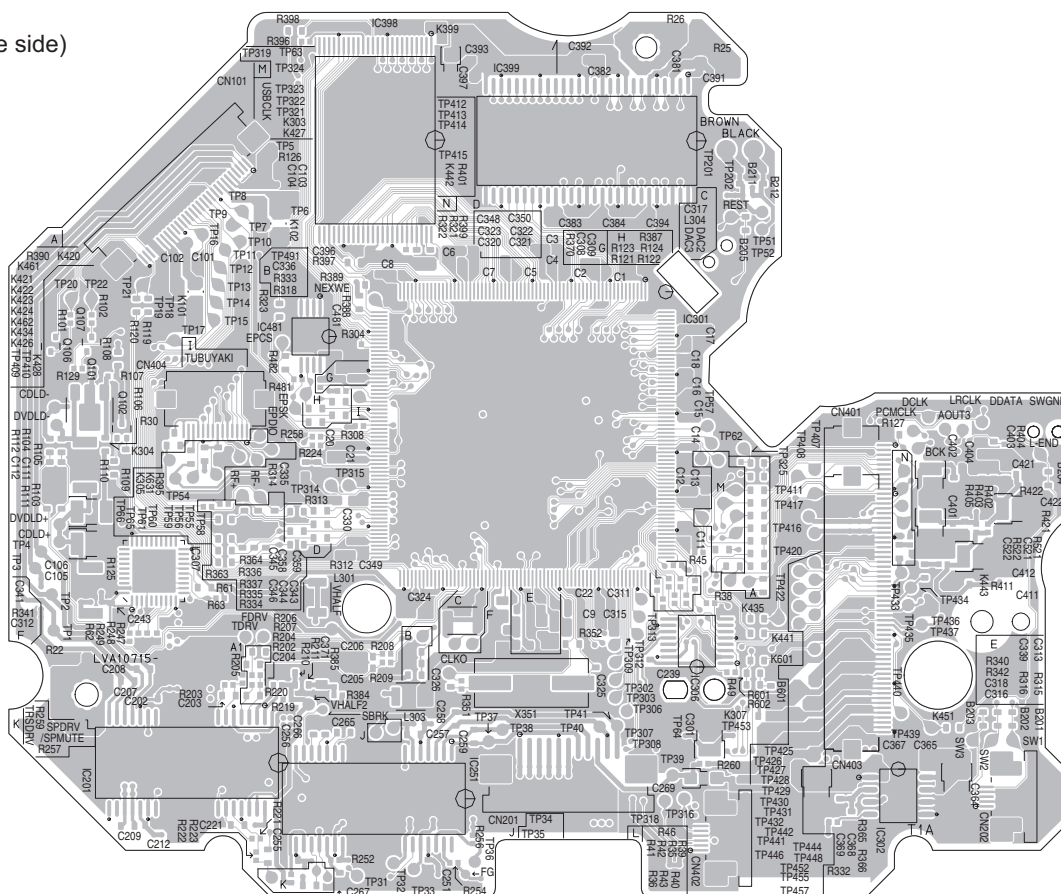
Lead free solder used in the board (material : Sn-Ag-Cu, melting point : 219 Centigrade)

Lead free solder used in the board (material : Sn-Cu, melting point : 230 Centigrade)

(forward side)



(reverse side)







**Victor Company of Japan, Limited**

Mobile Entertainment Business Group Mobile Entertainment Category 10-1, 1chome, Ohwatari-machi, Maebashi-city, Gumma-ken, 371-8543, Japan

(No.MA320SCH)



Printed in Japan  
VPT